



Ultrasound & Laser Therapy



THE BTL-4000 SERIES

This new and advanced series of physiotherapy products offers devices for ultrasound therapy, electrotherapy, laser as well as an extended line of combination therapy. The outstanding parameters and wide range of applicators, including the revolutionary HandsFree Sono®, make the 4000 series line an ideal choice for any professional practice.

The BTL-4000 series Ultrasound & Laser Combination Unit is available in one model:

BTL-4800 SMART

EASY OPERATION

- Touch screen available in one size: 4.3" for the **BTL-4800 SMART**

FULL RANGE OF APPLICATORS AND ACCESSORIES

- Time - saving HandsFree Sono® applicator
- Ergonomically designed laser probes, laser clusters & heated ultrasound applicators
- Well - designed durable trolley for everyday use
- L3 or higher protection safety glasses
- Optional laser cluster & probe holder to save time

PORTABILITY

- Easy manipulation
- Optional lightweight battery and carrying case

THERAPEUTICAL PROTOCOLS

- Wide library of preset protocols for easy and effective application
- Classification of the protocols according to the biological effects

COMBINATION UNIT

ULTRASOUND & LASER

This operator independent ultrasound system saves the operator's time, while making ultrasound treatment more effective than ever before. The laser has a wide spectrum of powerful applicators with two different wavelengths and adjustable intensity levels, allowing the operator to reach maximum treatment efficiency.

The large database of preset protocols makes the use of the laser unit easy and comfortable for advanced practitioners as well as for those new to the laser therapy. The easy operation, the most advanced parameters and a wide library of protocols make the BTL-4800 Smart the most advanced system in the industry.



BTL-4800 SMART

- 5 cm² Ultrasound applicator included
- 1 cm² Ultrasound applicator*
- HandsFree Sono® Ultrasound applicator*
- Simultaneous treatment with 1 and 3 MHz
- 4.3" colour touch screen
- Preset protocols and therapeutic encyclopaedia
- Patient database
- Heated ultrasound heads
- Portable and battery - operated*

*optional

FEATURES AND BENEFITS OF THE BTL-4800 ULTRASOUND & LASER

- Saving operator's time and effort with HandsFree Sono® ultrasound applicator
- Suitable for combined therapy (simultaneous ultrasound and laser therapy)
- Ergonomic ultrasound applicators with visual accessories identification / visual patient contact indicator
- Heated multi-frequency ultrasound applicators: 1 and 3 MHz available
- Two outputs for simultaneous connection of two laser applicators
- Wide range of red, infrared and combined laser probes and clusters
- Continuous and pulsed therapy options
- Automatic recalculation of laser therapy parameters
- Trolley

TECHNICAL SPECIFICATIONS OF THE BTL-4800 ULTRASOUND & LASER

Standard Specs

Display	4.3"
Dimensions	380x190x260mm
Weight	Max. 3 kg
Mains supply	100-240 V/AC, 50-60 Hz
Standard accessories	2x electrode connection cable - light grey and dark grey, 4x flat rubber electrode 5x7 cm, sponge covers, set of fixation straps, adapter, manual

Ultrasound Specs

Number of independent channels	1
Number of applicators simultaneously connected	2
Modular frequency	10-150 Hz
Duty factor	5-100%
Max. intensity in continuous mode	2 W / cm ²
Max. intensity in pulsed mode	3 W / cm ²

Laser Specs

Number of applicators simultaneously connected	2
Modes of operation	Continuous and pulsed
Dosage	0.1-100 J/cm ²
Frequency	0-10,000 Hz
Therapy area	0.1-100 cm ²
Duty factor	35-100 %
Laser class	3B

ACCESSORIES

Standard

BTL-4000-5CM	BTL Ultrasound Applicator - 5cm ²
--------------	--

Optional

BTL-4000-Cart	Trolley for BTL 4000 Series
BTL-4000-Battery	Battery Pack for BTL-4000 Smart/Premium
BTL-4000-Bag	Carry bag for BTL-4000 Smart/Premium
BTL-4000-1CM	BTL Ultrasound Applicator - 1cm ²
BTL-Sono-6	HandsFree Sono 6 Crystal (Includes 3 straps)
BTL-Sono-4	HandsFree Sono 4 Crystals (Includes 3 Straps)
BTL-Sono-PH	HandsFree Sono Holder
BTL-Sono-PT	HandsFree Sono holder for trolley
BTL-4110-GL	Safety glasses, L3 level protection or higher
BTL-4110-HL	Laser cluster and probe holder w/ adaptor for
BTL-4110-200mW	BTL Infrared Laser Probe - 830nm / 200mW
BTL-4110-400mW	BTL Infrared Laser Probe - 830nm / 400mW
BTL-4110-800mW	BTL Infrared Laser Cluster - 830nm / 800mW
BTL-4110-1300mW	BTL Infrared Laser Cluster - 830nm / 1300mW
BTL-4110-1500mW	BTL Infrared (830nm / 1300mW) & Red (685nm / 200mW) Laser Cluster - Total 1500mW output

*More probes and clusters available upon request.

ACCESSORIES



Cart for BTL-4000 Smart/Premium with laser cluster and probe holder



Battery Pack



6 crystal HandsFree Sono® applicator



Plastic holder for HandsFree Sono®



4 crystal HandsFree Sono® applicator



HandsFree Sono® holder for plastic trolley



5 cm² applicator



Safety glasses



Carry bag for BTL-4000 Smart/Premium



1 cm² applicator



Infrared probes



Laser clusters

HANDSFREE SONO®

THE ONLY OPERATOR INDEPENDENT APPLICATOR WITH ROTARY FIELD

The BTL HandsFree Sono® brings the unique Rotary Field Technology. It is the first ultrasound applicator on the market which creates electronically precise rotating ultrasound field without necessity of a therapist activity. This outstanding technology enables very fast, effective and comfortable treatment and reduces operator fatigue.



Automatic application by the HandsFree Sono®



Hand operated application by a therapist

ROTARY FIELD TECHNOLOGY: THE PRINCIPLE

The ultrasound Rotary Field Technology is the latest innovation based on multiple crystal applicators. The ultrasound crystals are organized in the applicator as an array of ultrasound transmitters which are controlled by a real time processor unit. The real time processor unit activates the individual crystals according to preset parameters.

The Rotating Field is created by a sequential activating of crystals while the real time processor controls speed of rotation, output power and depth of ultrasound field penetration for each individual crystal. Such a precise control makes the ultrasound therapy effective and safe against any risks such as hotspots which are typical of some stationary ultrasound technologies.

MAXIMUM FLEXIBILITY FOR ALL TREATMENT POSITIONS



FEATURES AND BENEFITS OF THE BTL Hands Free Sono®

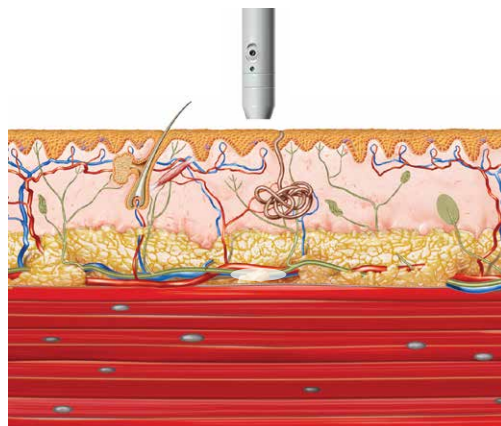
- Time Saver
 - More efficient ultrasound delivery, and eliminates application errors
 - Maximum safety using the embedded Rotary Field Technology
 - Equal ultrasound dosage over the entire treated area
 - Alternating frequencies: 1 and 3 MHz
 - Two models of HandsFree Sono: 18 cm² with 6 crystals; 12 cm² with 4 crystals
 - Gel pads not required
-

LASER THERAPY

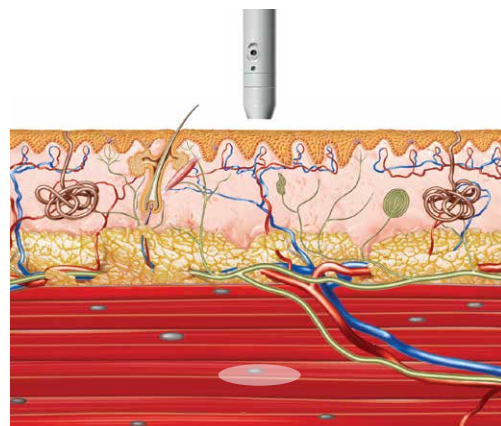
CLINICAL BACKGROUND

Laser therapy uses a beam of light with defined characteristics. As the beam penetrates the tissues of the human body, it causes analgesic and anti-inflammatory effects, as well as biostimulation.

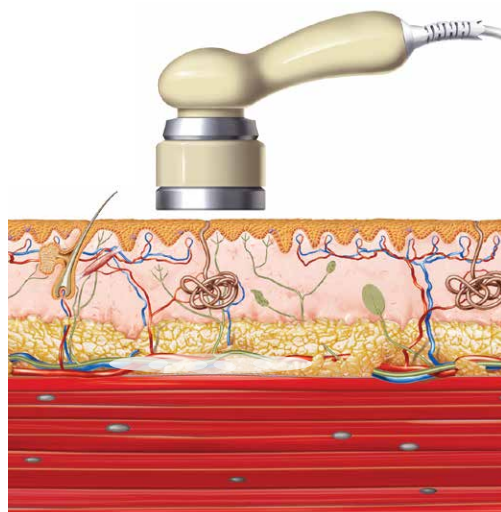
BTL offers a wide range of red, infrared and combined laser probes and clusters. Laser probes are suitable for treatment of smaller areas, while the laser clusters are designed to treat larger areas. Infrared applicators with the 830 nm wavelength generate laser light that penetrates deeper into the tissue. The red applicators with the 685 nm wavelength are used to treat superficial areas such as wounds, scars or haematomas.



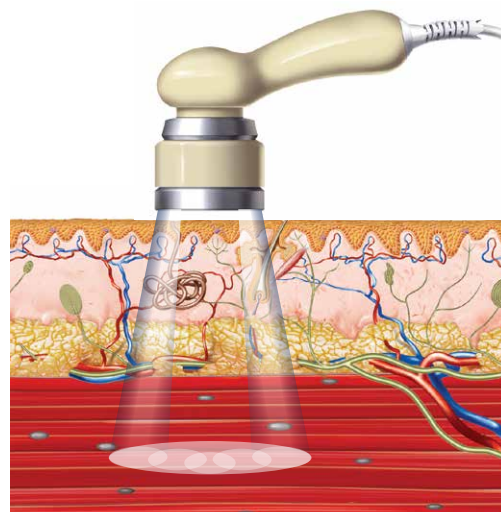
Red laser probe-for smaller, superficial areas



Infrared laser probe-for smaller, deeply located areas

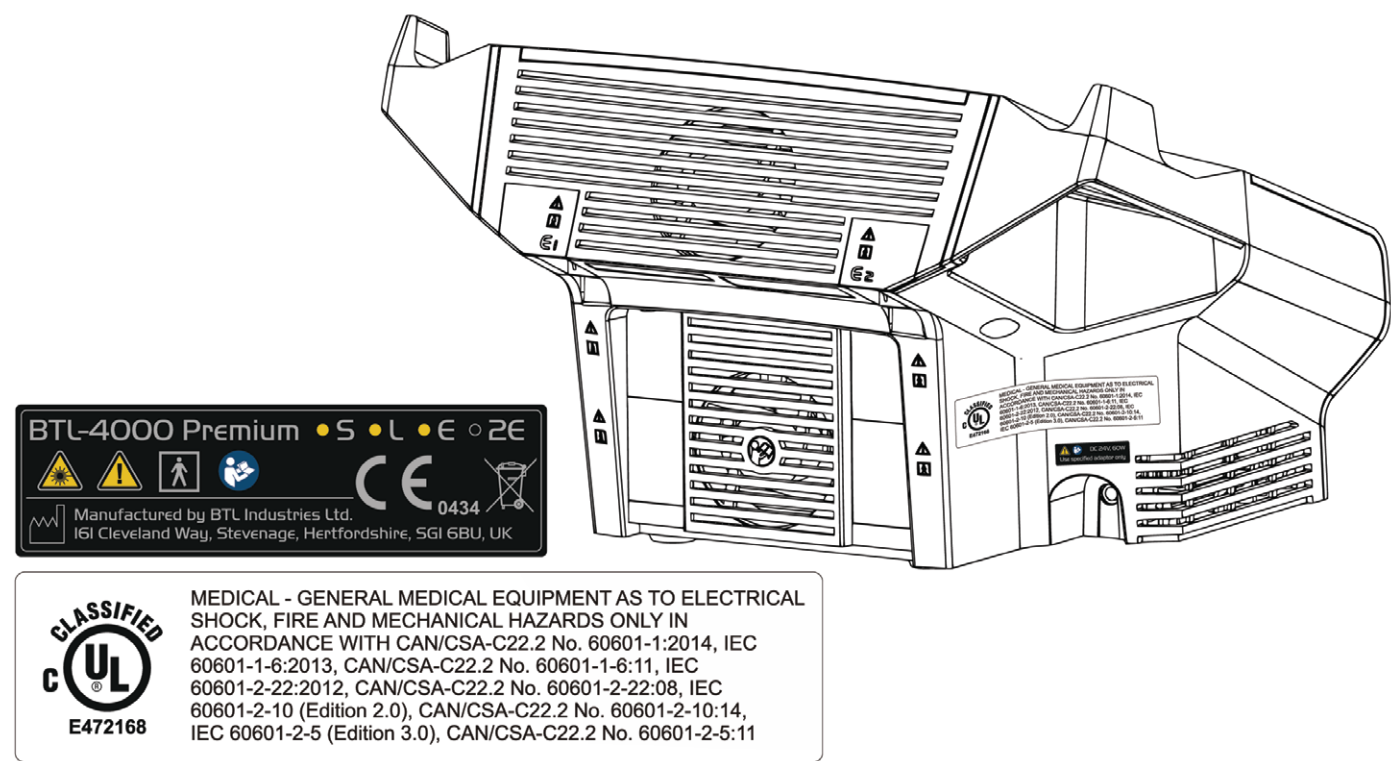


Red laser cluster-for larger, superficial areas



Infrared laser cluster-for larger, deeply located area

CANADIAN ELECTRICAL SAFETY LABELING OF BTL



Health
Canada Santé
Canada

MDALL LICENCES

BTL-4800 SMART (Ultrasound & Laser Therapy)	98761
ULTRASOUND HEAD (5cm ² & 1cm ²)	94527
HANDSFREE SONO	94535

Capital Equipment Expertise

OrthoCanada can help with comprehensive capital equipment purchase decisions clinic planning and set-ups. Since 1989, our knowledge and assistance have helped thousands of capital equipment decisions, including over 750 Canadian start-ups. We provide peer-to-peer (professional) advice, offer research subsidies and can help create everything from today's state-of-the-art clinics, to facilities with smaller budgets.



Our team of professionals provides comprehensive assistance with everything you need to get started. We provide equipment recommendations, advice on whether to buy or lease, as well as complete details on installation.

Tammy Boucher, BScPT
Vice-President, Capital Equipment Sales
tammy.boucher@orthocanada.com
1-800-561-0310 ext 1700

Biomedical Services

OrthoCanada prides itself on excellent after sales services. Our team ensures that all our customers are well taken care of and that the best possible service is offered at all times.

OrthoCanada's Biomedical Services department is certified to repair, test and calibrate all BTL physiotherapy and electrotherapy devices. OrthoCanada will support your practice to ensure your clinic does not lose a step in the event of technical issues. All repairs are handled with care and in a timely manner to ensure minimal disruption in your clinic.



A graduate in Biomedical and Electrical Engineering from Carleton University in Ottawa, Razi is also a certified technician for BTL electrotherapy and other medical device manufacturers.

"One of my greatest passion is to help healthcare practitioners choose equipment that best meets their needs and is tailored to their professional practice."

Razi Khaddage, B.Eng Biomedical & Electrical Engineering
Biomedical Services Manager
razi.khaddage@orthocanada.com
1-800-561-0310 ext 1704

Quote Form



Quote requested by:

Your Name _____

Company Name _____

Address _____

City _____

Postal Code _____ Province _____

Telephone () - Extension _____

Email _____

Please email quote requests
to quotes@orthocanada.com
or fax to 1.800.561.0349

Code	Description	Quantity

We Ship Anywhere Across Canada!

OrthoCanada strives to make ordering our products a positive, satisfying experience. Whether you're located in Little Shuswap or Happy Valley Goose Bay, our goal is to provide the best possible delivery service to our professional customers at an affordable price. We understand that getting your order to you promptly is our priority.



Take Advantage of our Free Shipping Offer

Professionals & institutions can take advantage of our Free Shipping policy everywhere in Canada on orders over \$250*

Standard Shipping Rate \$9.95

Our standard shipping rate for Professionals & institutions, on orders under \$250, is \$9.95 unless weight, location or size is a factor.

*Unless weight or size is a factor, or the product is shipping to a very remote location. If this is the case, a customer service representative will contact you to confirm the shipping cost prior to shipment. Standard shipping is provided by FedEx or by Canada Post. Larger items ship via surface freight. OrthoCanada provides shipping only within Canada at this time. Visit our website for our Terms & Conditions at orthocanada.com/en/shipping-info

All prices are subject to change without notice

Multi-Site Drop-Ship Locations

OrthoCanada's operation system enables us to set-up your institutional account with multiple drop-ship locations. Whether your locations are in the same city or are spread across the province or country, we can assure fast, efficient delivery. Contact us for more information.

