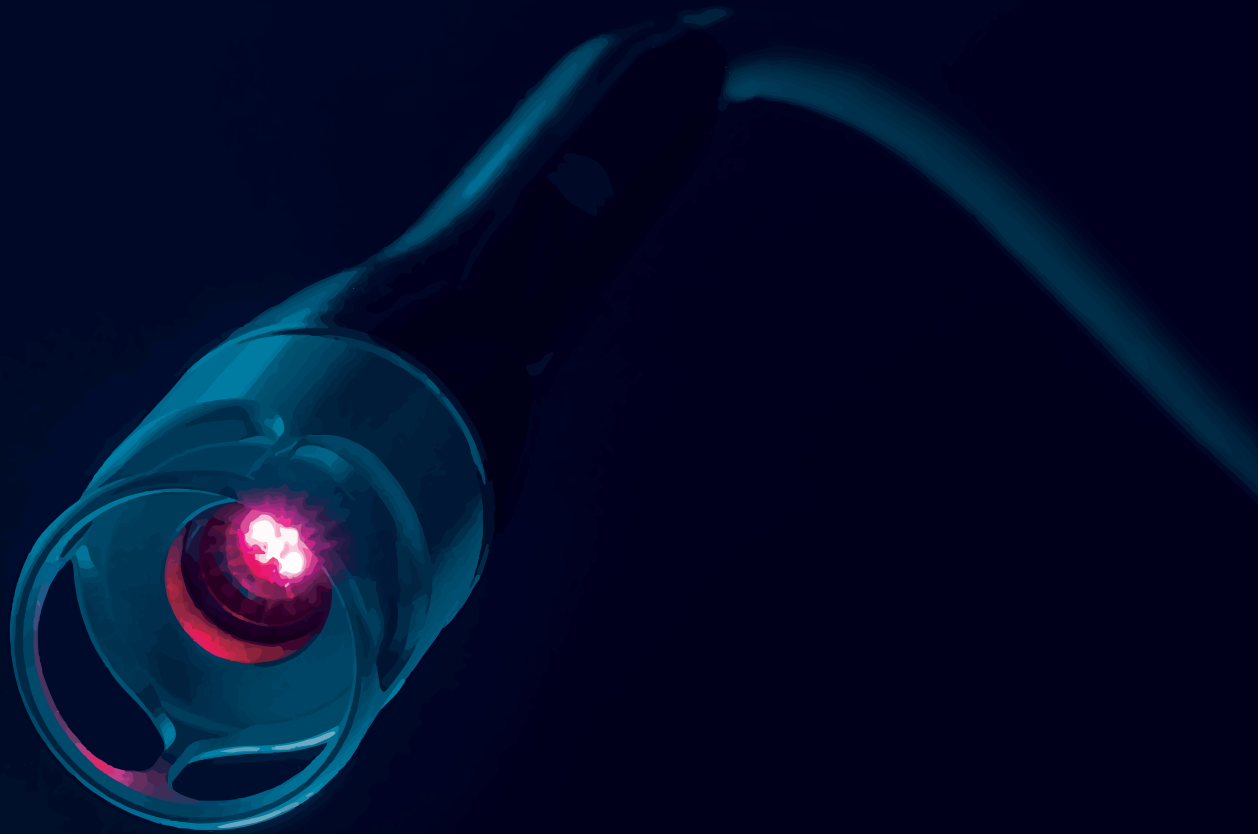




Laser Therapy



THE BTL-4000 SERIES

OrthoCanada can help with comprehensive capital equipment purchase decisions clinic planning and set-ups. Since 1989, our knowledge and assistance have helped thousands of capital equipment decisions, including over 750 Canadian start-ups. We provide peer-to-peer (professional) advice, offer research subsidies and can help create everything from today's state-of-the-art clinics, to facilities with smaller budgets.

The BTL-4000 series Laser is available in two models:

BTL-4110 SMART & **BTL-4110 PREMIUM**.

EASY OPERATION

- Therapy can be started with a single touch
- Possibility to select up to eight QUICK protocols for each therapy
- Large colour touch screen provides clear visualization of all important information
- Touch screen available in two sizes: 7" for the **BTL-4110 PREMIUM** or 4.3" for the **BTL-4110 SMART**

FULL RANGE OF APPLICATORS AND ACCESSORIES

- Ergonomically designed probes and clusters
- Well - designed durable trolley for everyday use
- L3 or higher protection safety glasses
- Optional laser cluster & probe holder to save time

DATABASE

- Easy management of the patient database
- All patient relevant information can be stored in the device memory
- Easy recall of patients' records and related treatments

PORTABILITY

- Easy manipulation
- Optional lightweight battery and carrying case

THERAPEUTICAL PROTOCOLS

- Wide library of preset protocols for easy and effective application
- Classification of the protocols according to the biological effects
- Full - colour encyclopaedia with anatomical images
- Description of therapies and positioning of applicators for treatment protocols
- Body Parts navigation for fast access to localized protocols

LASER THERAPY

FULL RANGE OF PROBES AND CLUSTERS FOR THE BEST THERAPEUTIC EFFECT

Both the BTL-4110 Smart and the BTL-4110 Premium Lasers have a wide spectrum of powerful applicators with two different wavelengths and adjustable intensity levels, allowing the operator to reach maximum treatment efficiency. The large database of preset protocols makes the use of the laser device easy and comfortable for advanced practitioners as well as for those new to the laser therapy.



BTL-4110 PREMIUM

- QUICK protocols
- Body Parts navigation
- Large 7" colour touch screen
- Preset protocols and therapeutic encyclopaedia
- Patient database
- Portable and battery-operated*

*optional



BTL-4110 SMART

- 4.3" colour touch screen
- Preset protocols and therapeutic encyclopaedia
- Portable and battery-operated*

*optional

FEATURES AND BENEFITS OF THE BTL-4110 SMART & PREMIUM LASER

- Two outputs for simultaneous connection of two laser applicators
- Wide range of red, infrared and combined laser probes and clusters
- Continuous and pulsed therapy options
- Automatic recalculation of therapy parameters
- Trolley*

*optional

TECHNICAL SPECIFICATIONS OF THE BTL-4110 LASER

Standard Specs

Model	BTL-4110 SMART	BTL-4110 PREMIUM
Part number	BTL-4110-Smart	BTL-4110-Premium
Display	4.3"	7"
QUICK protocols		
Body Parts navigation		
Patient database		
Number of applicators simultaneously connected	2	2
Modes of operation	Continuous and pulsed	Continuous and pulsed
Dosage	0.1-100 J/cm ²	0.1-100 J/cm ²
Frequency	0-10,000 Hz	0-10,000 Hz
Therapy area	0.1-100 cm ²	0.1-100 cm ²
Duty factor	35-100 %	35-100 %
Laser class	3B	3B
Dimensions	380 × 190 × 260 mm	
Weight	Max. 3 kg	
Mains supply	100-240 V, 50-60 Hz	
Standard accessories	Holder for laser probe, adapter, manual	

OPTIONAL ACCESSORIES

BTL-4000-Cart	Trolley for BTL 4000 Series
BTL-4000-Battery	Battery Pack for BTL-4000 Smart/Premium
BTL-4000-Bag	Carry bag for BTL-4000 Smart/Premium
BTL-4110-GL	Safety glasses, L3 level protection or higher
BTL-4110-HL	Laser cluster and probe holder w/ adaptor for
BTL-4110-200mW	BTL Infrared Laser Probe - 830nm / 200mW
BTL-4110-400mW	BTL Infrared Laser Probe - 830nm / 400mW
BTL-4110-800mW	BTL Infrared Laser Cluster - 830nm / 800mW
BTL-4110-1300mW	BTL Infrared Laser Cluster - 830nm / 1300mW
BTL-4110-1500mW	BTL Infrared (830nm / 1300mW) & Red (685nm / 200mW) Laser Cluster - Total 1500mW output

*More probes and clusters available upon request.

ACCESSORIES



Cart for BTL-4000 Smart/Premium
with laser cluster and probe holder



Laser clusters



Infrared probes



Carry bag for
BTL-4000 Smart/Premium



Battery Pack



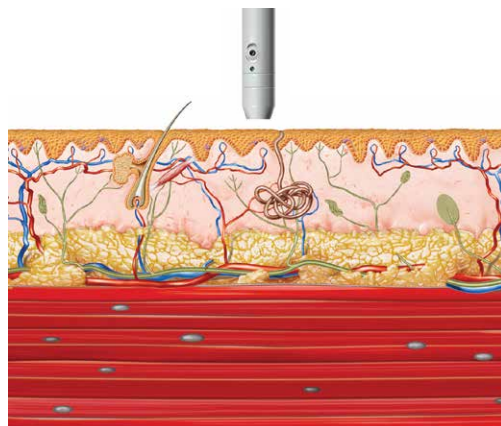
Safety glasses

LASER THERAPY

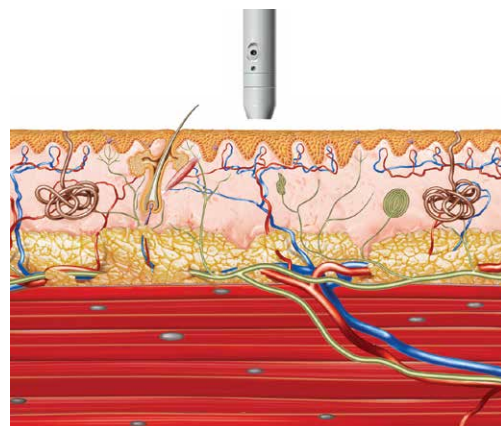
CLINICAL BACKGROUND

Laser therapy uses a beam of light with defined characteristics. As the beam penetrates the tissues of the human body, it causes analgesic and anti-inflammatory effects, as well as biostimulation.

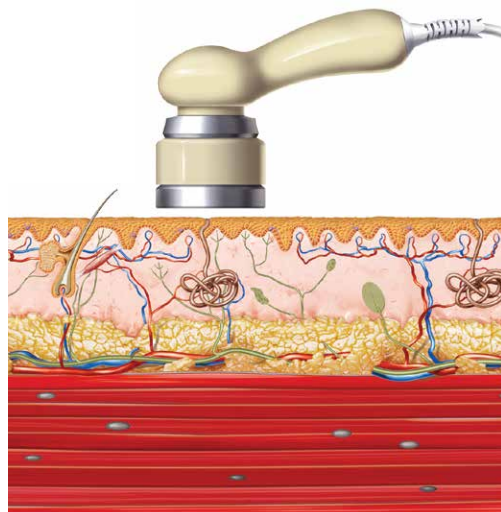
BTL offers a wide range of red, infrared and combined laser probes and clusters. Laser probes are suitable for treatment of smaller areas, while the laser clusters are designed to treat larger areas. Infrared applicators with the 830 nm wavelength generate laser light that penetrates deeper into the tissue. The red applicators with the 685 nm wavelength are used to treat superficial areas such as wounds, scars or haematomas.



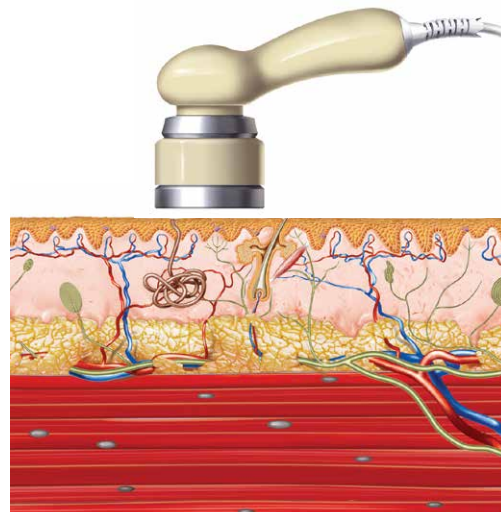
Red laser probe-for smaller, superficial areas



Infrared laser probe-for smaller, deeply located areas



Red laser cluster-for larger, superficial areas



Infrared laser cluster-for larger, deeply located area

CANADIAN ELECTRICAL SAFETY LABELING OF BTL

BTL-4000 Premium

S • L • E • 2E













Manufactured by BTL Industries Ltd.

161 Cleveland Way, Stevenage, Hertfordshire, SG1 6BU, UK

0434

CLASSIFIED



E472168

MEDICAL - GENERAL MEDICAL EQUIPMENT AS TO ELECTRICAL SHOCK, FIRE AND MECHANICAL HAZARDS ONLY IN ACCORDANCE WITH CAN/CSA-C22.2 No. 60601-1:2014, IEC 60601-1-6:2013, CAN/CSA-C22.2 No. 60601-1-6:11, IEC 60601-2-22:2012, CAN/CSA-C22.2 No. 60601-2-22:08, IEC 60601-2-10 (Edition 2.0), CAN/CSA-C22.2 No. 60601-2-10:14, IEC 60601-2-5 (Edition 3.0), CAN/CSA-C22.2 No. 60601-2-5:11





Health
Canada

Santé
Canada

MDALL LICENCES

BTL-4000 SERIES LASER UNITS

98761

Capital Equipment Expertise

OrthoCanada can help with comprehensive capital equipment purchase decisions clinic planning and set-ups. Since 1989, our knowledge and assistance have helped thousands of capital equipment decisions, including over 750 Canadian start-ups. We provide peer-to-peer (professional) advice, offer research subsidies and can help create everything from today's state-of-the-art clinics, to facilities with smaller budgets.



Our team of professionals provides comprehensive assistance with everything you need to get started. We provide equipment recommendations, advice on whether to buy or lease, as well as complete details on installation.

Tammy Boucher, BScPT
Vice-President, Capital Equipment Sales
tammy.boucher@orthocanada.com
1-800-561-0310 ext 1700

Biomedical Services

OrthoCanada prides itself on excellent after sales services. Our team ensures that all our customers are well taken care of and that the best possible service is offered at all times.

OrthoCanada's Biomedical Services department is certified to repair, test and calibrate all BTL physiotherapy and electrotherapy devices. OrthoCanada will support your practice to ensure your clinic does not lose a step in the event of technical issues. All repairs are handled with care and in a timely manner to ensure minimal disruption in your clinic.



A graduate in Biomedical and Electrical Engineering from Carleton University in Ottawa, Razi is also a certified technician for BTL electrotherapy and other medical device manufacturers.

"One of my greatest passion is to help healthcare practitioners choose equipment that best meets their needs and is tailored to their professional practice."

Razi Khaddage, B.Eng Biomedical & Electrical Engineering
Biomedical Services Manager
razi.khaddage@orthocanada.com
1-800-561-0310 ext 1704

Quote Form



Quote requested by:

Your Name _____

Company Name _____

Address _____

City _____

Postal Code _____ Province _____

Telephone () - Extension _____

Email _____

Please email quote requests
to quotes@orthocanada.com
or fax to 1.800.561.0349

Code	Description	Quantity

We Ship Anywhere Across Canada!

OrthoCanada strives to make ordering our products a positive, satisfying experience. Whether you're located in Little Shuswap or Happy Valley Goose Bay, our goal is to provide the best possible delivery service to our professional customers at an affordable price. We understand that getting your order to you promptly is our priority.



Take Advantage of our Free Shipping Offer

Professionals & institutions can take advantage of our Free Shipping policy everywhere in Canada on orders over \$250*

Standard Shipping Rate \$9.95

Our standard shipping rate for Professionals & institutions, on orders under \$250, is \$9.95 unless weight, location or size is a factor.

*Unless weight or size is a factor, or the product is shipping to a very remote location. If this is the case, a customer service representative will contact you to confirm the shipping cost prior to shipment. Standard shipping is provided by FedEx or by Canada Post. Larger items ship via surface freight. OrthoCanada provides shipping only within Canada at this time. Visit our website for our Terms & Conditions at orthocanada.com/en/shipping-info

All prices are subject to change without notice

Multi-Site Drop-Ship Locations

OrthoCanada's operation system enables us to set-up your institutional account with multiple drop-ship locations. Whether your locations are in the same city or are spread across the province or country, we can assure fast, efficient delivery. Contact us for more information.

