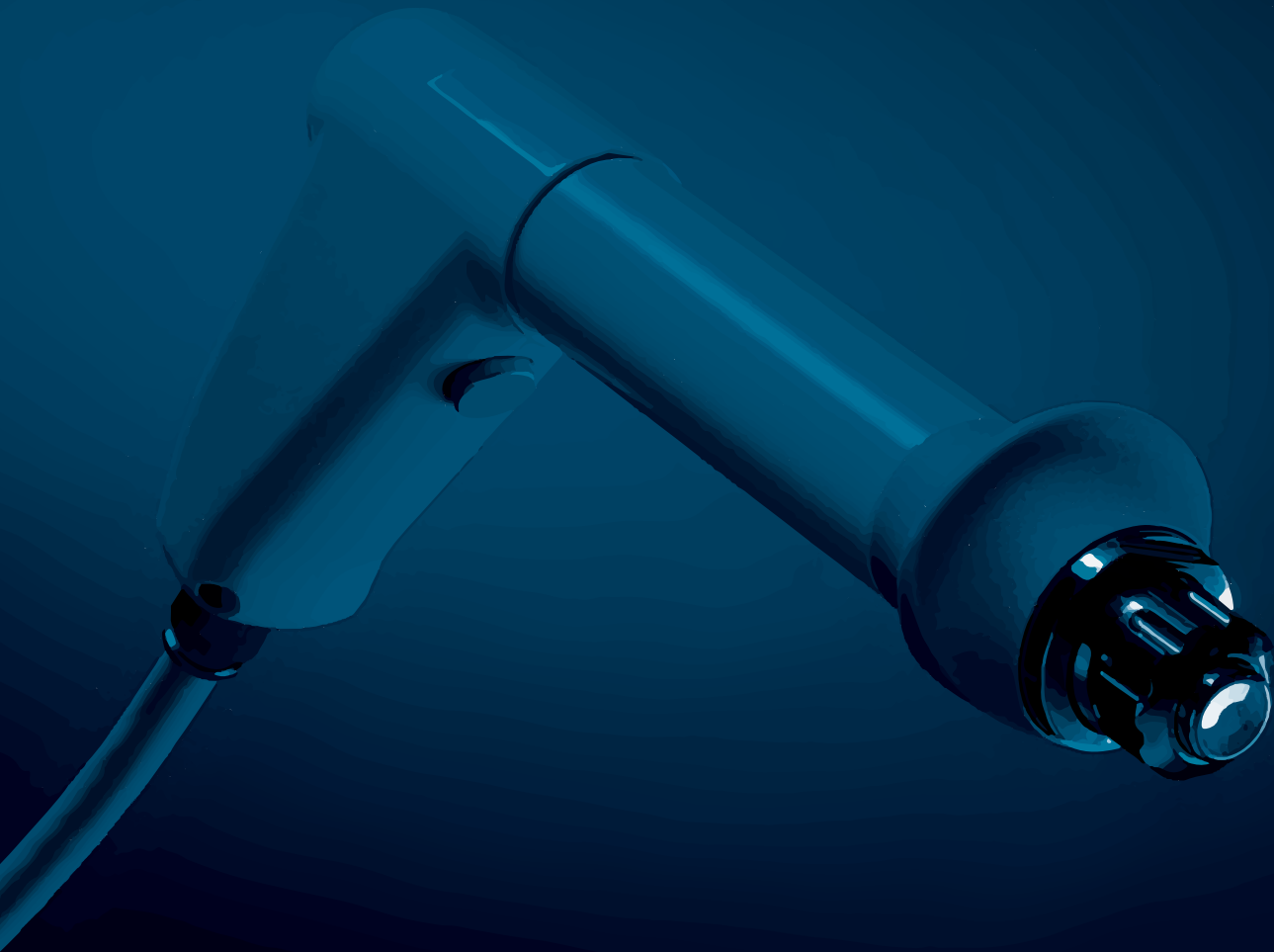


ORTHOCANADA



Shockwave Therapy



# SHOCKWAVE THERAPY

## HIGHLY EFFECTIVE PAIN TREATMENT

BTL Shockwave therapy is a new non-invasive solution for chronic musculoskeletal pain. The Extracorporeal Shockwave therapy is frequently used in physiotherapy, orthopaedics and sports medicine. Applications are mostly associated with the treatment of chronic muscular and tendon disorders, back and cervical pain.

Most common indications include: painful shoulder, epicondylitis, low back pain, Achilles tendon pain, tendonitis and trigger points. During the therapy, a highintensity acoustic wave interacts with the tissues of the body. This leads to a cascade of beneficial effects including neovascularization, reversal of chronic inflammation, stimulation of collagen production and dissolution of calcium build-up. Stimulation of these biological mechanisms creates an optimal healing environment. As the injured area is returned to normal, functionality is restored and pain is relieved.

The BTL Shockwave is the most powerful and compact Shockwave system on the market. It is supplied with ergonomically shaped applicator with extremely long lifetime.

In 2014, the BTL - 6000 SWT Topline achieved the Red Dot Design Award, one of the most respected worldwide awards in product design. The BTL - 6000 SWT Topline won this coveted award due to its superior functionality, level of innovation, formal design quality and technological expertise.



**reddot** award 2014  
winner

# SHOCKWAVE THERAPY

## FAST AND PERMANENT RELIEF FROM PAIN

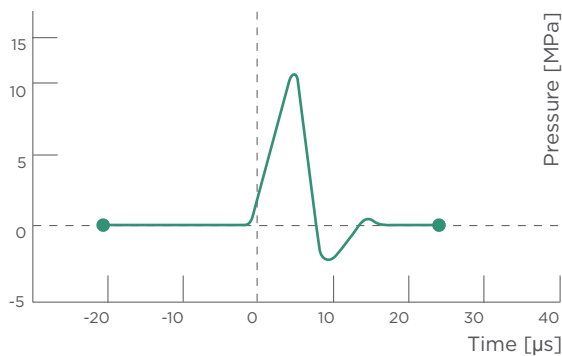
- Unique, non-invasive solution for musculoskeletal pain
- Just three to four treatments needed at weekly intervals
- A therapy session only takes about 10 minutes

## FIELDS OF APPLICATION

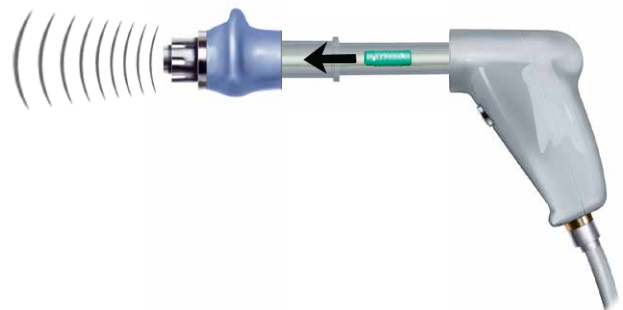
- Orthopaedics
- Rehabilitation
- Sports medicine

## MECHANISM OF ACTION

A shockwave is an acoustic wave which carries high energy to painful spots and myoskeletal tissues with subacute, subchronic and chronic conditions. The energy promotes regenerating and reparative processes of the bones, tendons and other soft tissues.



Shockwaves are characterized by jump change in pressure, high amplitude and non-periodicity.

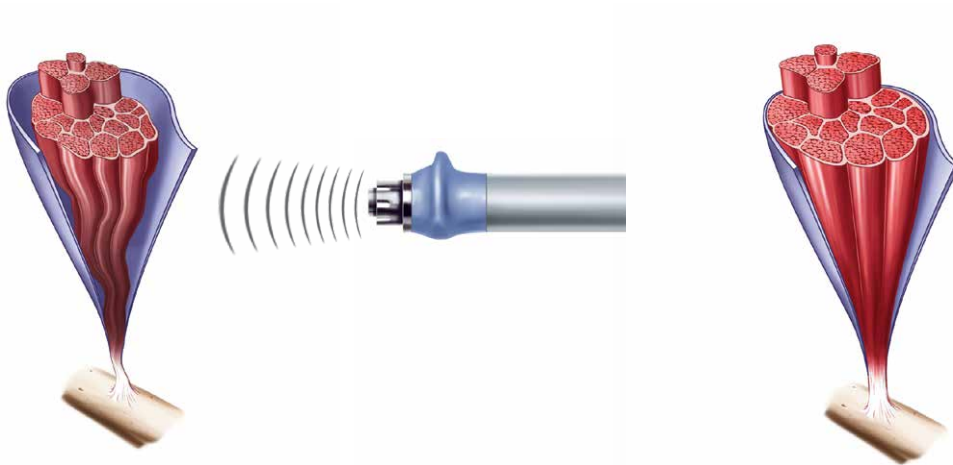


The kinetic energy of the projectile, created by compressed air, is transferred to the transmitter at the end of the applicator.

# ANALGESIC EFFECT - ELIMINATION OF PAIN

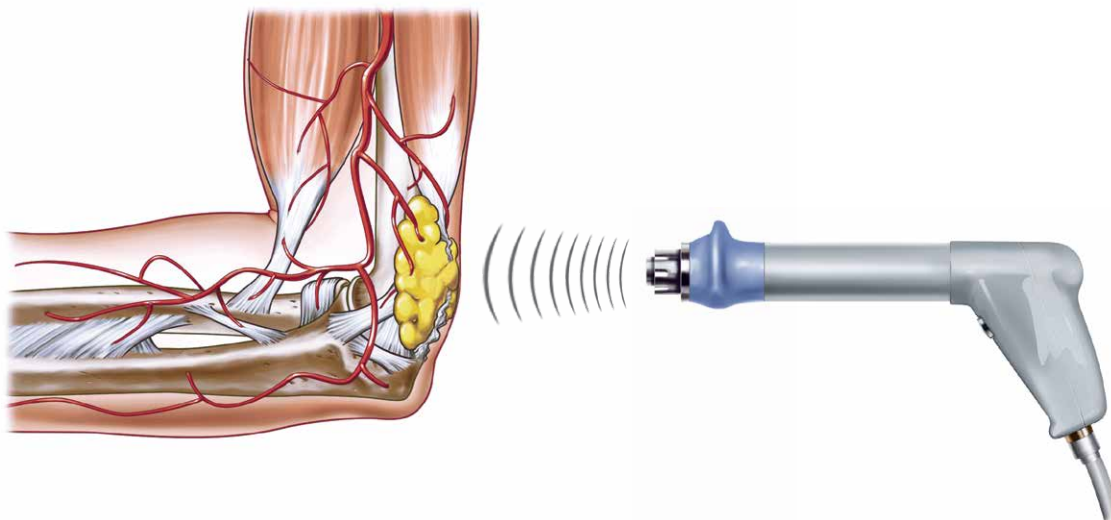
## DECREASE OF MUSCLE TENSION, INHIBITION OF SPASMS

Hyperaemia is one of the basic effects of Shockwave therapy in the body. It provides better energy supply to hypertonic muscles and their ligamentous structures. Furthermore, it causes lessening of pathological interactions between actin and myosin. This leads to significant reduction of muscle tension.



## ENHANCED DISPERSION OF SUBSTANCE P

The activity of Substance P (a pain mediator and growth factor) leads to stimulation of afferent nociceptive fibres. It also supports development of oedema and supports secretion of histamine. Reduction of substance P concentration reduces pain in the affected area and decreases the development of oedema.



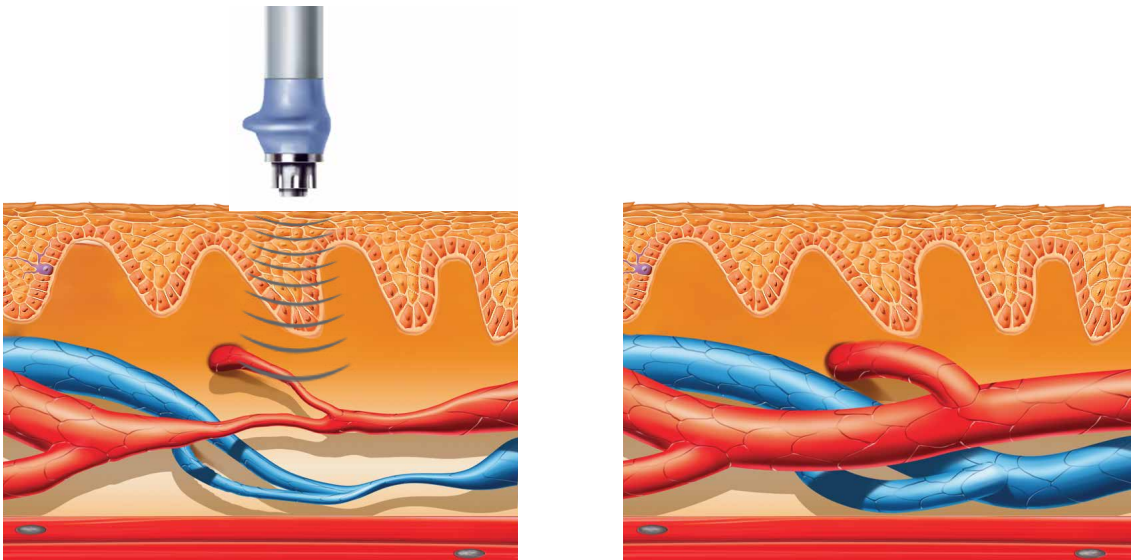
# ACCELERATION OF HEALING

## INCREASE OF COLLAGEN PRODUCTION

Production of a sufficient amount of collagen is a necessary precondition for the repair processes of the damaged myoskeletal and ligamentous structures.

## IMPROVED METABOLISM AND MICROCIRCULATION

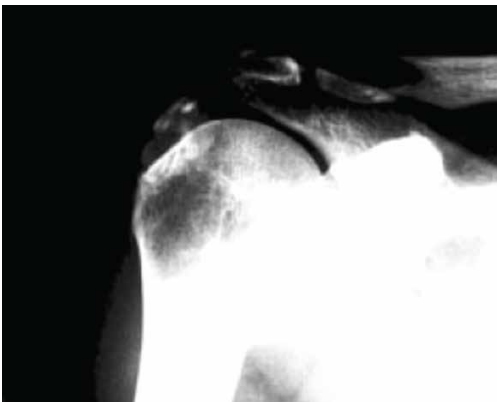
The SWT technology accelerates removal of nociceptive metabolites, increases oxygenation and supplies damaged tissue with source of energy. It supports removal of histamine, lactic acid and other irritating agents.



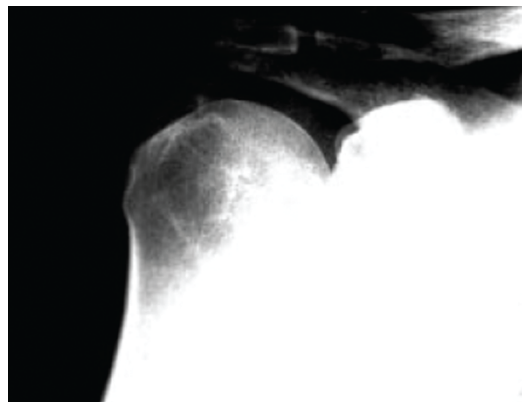
# MOBILITY RESTORATION

## DISSOLUTION OF THE CALCIFIED FIBROBLASTS

The SWT technology dissolves calcified fibroblasts and starts subsequent biochemical decalcification of primary calcaria or secondary symptoms of arthrosis.



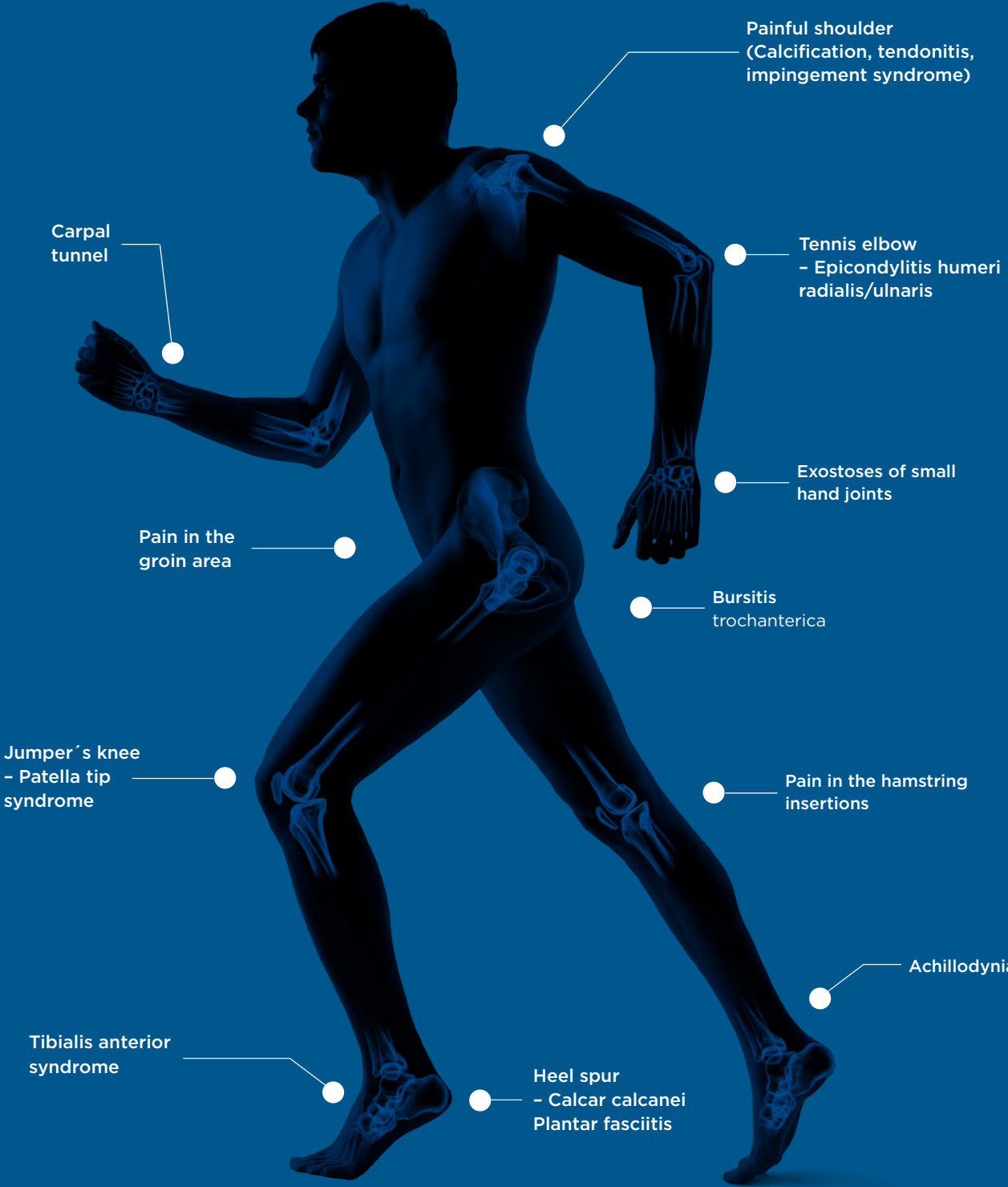
Before shockwave treatment



After 3<sup>rd</sup> application

# MOST COMMON INDICATIONS

- Trigger Points
- Chronic enthesopathies



# BTL-6000 SWT TOPLINE POWER

## THE STRONGEST PORTABLE SHOCKWAVE

SKU: BTL-SWT-TopPW

---

- Pressure up to 5 bars
  - Frequency up to 20 Hz
- 

### FEATURES & BENEFITS

---

- Touch operation - intuitive operation with colour touch screen (5.7")
  - Compact and portable - only 7 kg including the built-in compressor
  - Easy-to-use by any therapist - therapeutic encyclopaedia with colour anatomical images, user-defined therapies for experienced users
  - Ergonomic applicator
- 



BTL-6000 Topline Power  
shown w/ optional cart



**Touch operation**  
Intuitive operation with colour touch screen (5.7")



**Ergonomic applicator for comfortable use**  
Ergonomy designed by users



**Compact and portable**  
Only 7 kg including the built-in compressor

# BTL-6000 SWT EASY

## COMPACT & EASY TO USE DEVICE

SKU: BTL-SWT-Easy

---

- Pressure up to 4 bars
  - Frequency up to 15 Hz
- 

### FEATURES & BENEFITS

---

- User-friendly operation with LED interface, 7 preset protocols, adjustment of the parameters during the course of the therapy
  - Compact and portable - only 7 kg including the built-in compressor
  - Ergonomic applicator
- 



BTL-6000 Easy  
shown w/ optional cart



**Ergonomic applicator  
for comfortable use**  
Ergonomy designed by users



**Compact and portable**  
Only 7 kg including  
the built-in compressor



# ERGONOMY

## DESIGNED BY USERS

### ERGONOMICALLY SHAPED HANDLE

- Ergonomic shape of the handle allows comfortable (“gun-like”) grip of the applicator
- The most comfortably-shaped applicator on the market



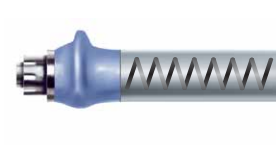
### SPECIAL ERGONOMIC GRIP

- Prevents the handpiece from slipping out of the therapist's hand during treatment
- The ergonomic shape allows the therapist to hold the handpiece comfortably in many different positions; the handpiece can be held in either right or left hand and can be effectively used by both men and women
- Provides sufficient support for the therapist's hand to prevent fatigue during extended use



### ELIMINATION OF BACKWARD SHOCKS

- Spring-loaded applicator to eliminate the transfer of reverse shocks to the therapist's hand
- Provides appropriate contact of the treated tissue and the applicator during the therapy
- Built-in air dumper



### MULTIFOCUSED TRANSMITTERS

- Specially designed transmitters with several focal points
- Allow a more effective energy transmission into the target tissue



# SIMPLE OPERATION

## JUST 3 STEPS

1. Locate painful spots using palpation
2. Apply gel
3. Deliver shockwaves



Locating painful spots



Applying the gel



Delivering shockwaves

## THE EASY-TO-USE BTL THERAPEUTIC ENCYCLOPAEDIA

Following the latest medical research, BTL has developed the shockwave therapeutic encyclopaedia for easy and effective treatment.

### PROGRAMME **W-0108 RADIAL/ULNAR EPICONDYLITIS**

Therapy parameters	type of shocks: continuous pressure: 2 bar frequency: 10 Hz number of shocks: 2000
Patient position	Lying on back or sitting upright with the arm at a right-angled flexion at the elbow; arm should be comfortably supported, preferably with a soft cushioning pad
Frequency of treatments	5-10 days
Number of treatments	3-5 sessions
Process of treatment	Manually localize painful points in the area of radial/ulnar epicondyle and along the corresponding muscle groups of the forearm. > Application of gel. > Start the therapy with 400 shocks at 2 bar and 5 Hz around the most painful point. > Manually localize the most painful point with approximately 1000 shocks > Successively apply to the corresponding muscle groups of the forearm the last 400 pulses applied with a frequency of 10 Hz
Note	Painful points are indicated by the dotted areas in the picture. The arrows indicate the direction of movement of the applicator

# MOST COMMON APPLICATIONS

The examples below illustrate therapy application in different locations. The applicator can be held in either right or left hand. There are many ways to hold and grip the BTL handpiece. It is surprisingly easy and comfortable to use.

## PAINFUL SHOULDER (CALCIFICATION, TENDONITIS, IMPINGEMENT SYNDROME)

Therapy parameters	pressure: 3-4 bar frequency: 10-15 Hz number of shocks: 2000
--------------------	--

Patient position	lying on back or sitting upright
Frequency of treatments	5-10 days
Number of treatments	3-5 sessions



## HEEL SPUR, PLANTAR FASCIITIS

Therapy parameters	pressure: 2.5-3.5 bar frequency: 10-15 Hz number of shocks: 2000
--------------------	--

Patient position	lying prone supported under the ankle
Frequency of treatments	5-10 days
Number of treatments	3-5 sessions



## RADIAL/ULNAR EPICONDYLITIS

Therapy parameters	pressure: 2-2.5 bar frequency: 5-10 Hz number of shocks: 2000
--------------------	---

Patient position	lying on back or sitting upright with the arm at a right-angle flexion at the elbow; arm should be comfortably supported, preferably with a soft cushioning pad
Frequency of treatments	5-10 days
Number of treatments	3-5 sessions



## ACHILLODYNIA

Therapy parameters	pressure: 2-3 bars frequency: 5-10 Hz
--------------------	--

Patient position	lying prone supported under the ankle
Frequency of treatments	5-10 days
Number of treatments	3-5 sessions



# TECHNICAL PARAMETERS

MODEL	BTL-6000 TOPLINE POWER	BTL-6000 SWT EASY
User interface	5.7" colour touch screen	LED interface
Max. pressure	up to 5 bars	up to 4 bars
Frequency	1-20 Hz	1-15 Hz
Single mode & Continuous mode	•	•
Intensity gradient mode	•	
Preset programs	27	7
Encyclopaedia	•	
Encyclopaedia with anatomical images	•	
User-defined protocols	100	
Dimensions	230 × 390 × 260 mm (main unit) 330 × 220 × 300 mm (air compressor)	320 × 190 × 280 mm
Weight: main unit (without accessories)	4.7-5.3 kg	7 kg
Weight: compressor	20 kg	
Standard accessories	Transmitters: 9, 15 mm multi-focused and 15 mm focused, gel 1000 ml, touch screen pen pointer	Transmitters: 9, 15 mm multi-focused and 15 mm focused, gel 300 ml, touch screen pen pointer

## Optional accessories

BTL-SWT-RK	BTL-6000 Shockwave Revision Kit
BTL-SWT-Case	Transportation Case for BTL-6000 SWT
BTL-6000-Cart	Shockwave Cart
BTL-SWT-Poster	BTL-6000 Shockwave Poster
BTL-SWT-Brochure	Brochure

# CANADIAN ELECTRICAL SAFETY LABELING OF BTL



Health  
Canada

Santé  
Canada

## MDALL LICENCES

BTL-SWT SERIES SHOCKWAVE UNITS .....94535

# Capital Equipment Expertise

OrthoCanada can help with comprehensive capital equipment purchase decisions clinic planning and set-ups. Since 1989, our knowledge and assistance have helped thousands of capital equipment decisions, including over 750 Canadian start-ups. We provide peer-to-peer (professional) advice, offer research subsidies and can help create everything from today's state-of-the-art clinics, to facilities with smaller budgets.



Our team of professionals provides comprehensive assistance with everything you need to get started. We provide equipment recommendations, advice on whether to buy or lease, as well as complete details on installation.

**Tammy Boucher**, BScPT  
Vice-President, Capital Equipment Sales  
tammy.boucher@orthocanada.com  
1-800-561-0310 ext 1700

# Biomedical Services

OrthoCanada prides itself on excellent after sales services. Our team ensures that all our customers are well taken care of and that the best possible service is offered at all times.

OrthoCanada's Biomedical Services department is certified to repair, test and calibrate all BTL physiotherapy and electrotherapy devices. OrthoCanada will support your practice to ensure your clinic does not lose a step in the event of technical issues. All repairs are handled with care and in a timely manner to ensure minimal disruption in your clinic.



A graduate in Biomedical and Electrical Engineering from Carleton University in Ottawa, Razi is also a certified technician for BTL electrotherapy and other medical device manufacturers.

"One of my greatest passion is to help healthcare practitioners choose equipment that best meets their needs and is tailored to their professional practice."

**Razi Khaddage**, B.Eng Biomedical & Electrical Engineering  
Biomedical Services Manager  
razi.khaddage@orthocanada.com  
1-800-561-0310 ext 1704

# Quote Form



## Quote requested by:

Your Name \_\_\_\_\_

Company Name \_\_\_\_\_

Address \_\_\_\_\_

City \_\_\_\_\_

Postal Code \_\_\_\_\_ Province \_\_\_\_\_

Telephone (      ) - \_\_\_\_\_ Extension \_\_\_\_\_

Email \_\_\_\_\_

Please email quote requests  
to [quotes@orthocanada.com](mailto:quotes@orthocanada.com)  
or fax to 1.800.561.0349

Code	Description	Quantity

# We Ship Anywhere Across Canada!

OrthoCanada strives to make ordering our products a positive, satisfying experience. Whether you're located in Little Shuswap or Happy Valley Goose Bay, our goal is to provide the best possible delivery service to our professional customers at an affordable price. We understand that getting your order to you promptly is our priority.



## Take Advantage of our Free Shipping Offer

Professionals & institutions can take advantage of our Free Shipping policy everywhere in Canada on orders over \$250\*

### Standard Shipping Rate \$9.95

Our standard shipping rate for Professionals & institutions, on orders under \$250, is \$9.95 unless weight, location or size is a factor.

\*Unless weight or size is a factor, or the product is shipping to a very remote location. If this is the case, a customer service representative will contact you to confirm the shipping cost prior to shipment. Standard shipping is provided by FedEx or by Canada Post. Larger items ship via surface freight. OrthoCanada provides shipping only within Canada at this time. Visit our website for our Terms & Conditions at [orthocanada.com/en/shipping-info](http://orthocanada.com/en/shipping-info)

All prices are subject to change without notice

## Multi-Site Drop-Ship Locations

OrthoCanada's operation system enables us to set-up your institutional account with multiple drop-ship locations. Whether your locations are in the same city or are spread across the province or country, we can assure fast, efficient delivery. Contact us for more information.

