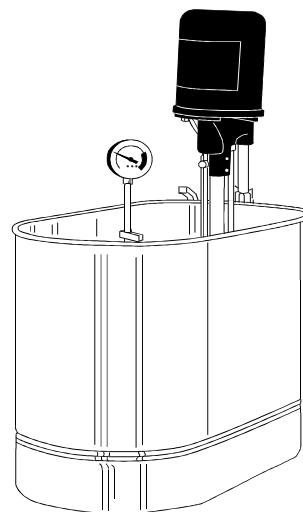


## Model 600 Whirlpool

The Model 600 Whirlpool is designed to give immersion hydrotherapy to the arms and legs of a patient. It features a stationary therapy tank fill and drain components, a Model 100 Turbine to generate a therapeutic flow of water, and a thermometer to measure the temperature of the water. The whirlpool is U.L./C.U.L. Listed.



### Tank

The tank is made of 18 gauge Type 304 stainless steel which is formed, welded, and finished into a seamless unit. It has a beaded rim, vertical walls with embossed marks at 10-gallon intervals, and a coved reinforced bottom.

Water fills the tank through an over-the-rim inlet to prevent backflow. A drain on the tank wall prevents overflow. Water empties from the tank by gravity through a drain in the tank bottom. Drainage is controlled by a manually operated valve on the outside wall of the tank.

### Thermometer

The thermometer is a sanitary, solid-stem bimetal type with a 3" dial. It is mounted inside the tank, and has a dial range of 40°F to 140°F (5°C to 60°C).

### Turbine

The turbine is powered by a 1/3 hp, 3450 rpm electric motor having sealed bearings and thermal overload protection. The motor is connected by a stainless steel shaft to a nylon impeller. The shaft runs inside of a support tube, and is stabilized by a water-lubricated bearing.

An aerator tube injects air into the output stream from the impeller. The shaft-support tube and the aerator tube each have a portal for disinfecting the internal surfaces of the impeller and the aerator.

A manual valve on the impeller-housing inlet controls the impeller output from 0 to 45 gal/min. A manual valve on the aerator tube controls how much air is injected into the output stream.

The turbine mounts on a gas cylinder telescoping post at one end of the tank. A friction clamp on the post controls vertical positioning. A plug on the turbine supply cord plugs into a receptacle provided by the user.

### Optional Accessories

- Mixing Valves & Consoles
- Patient Chairs
- Patient Lifts & Carriers
- Patient Seats & Supports
- Tank & Turbine Products
- GFCI Plug

## Specifications

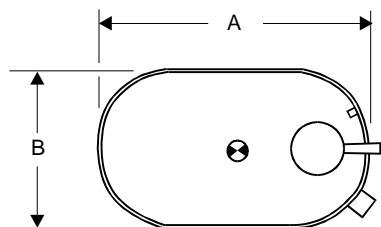
### Mechanical

A. Length .....	36 in .....	91 cm
B. Width .....	22 in .....	56 cm
C. Depth .....	28 in .....	71 cm
D. Height .....	33 in .....	84 cm
E. Height w/Turbine		
min .....	45 in .....	113 cm
max .....	57 in .....	143 cm
Water Capacity .....	72 gal .....	273 L
Weight (Filled) .....	723 lb .....	328 kg
Weight (Empty) .....	123 lb .....	56 kg
Drain Size .....	2 in .....	5 cm

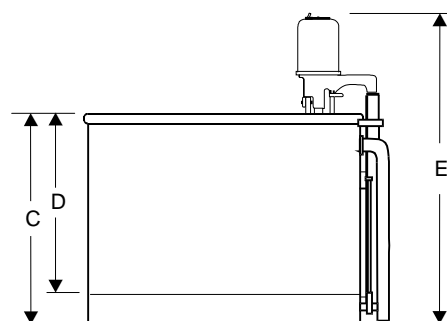
### Electrical

115V 60Hz Unit	
Rating at Full Load	8 Amp 760 Watt
Supply Cord Plug	NEMA 5-15P
Supply Cord GFCI	No
Supply Cord Length	10
Supply Cord Type	SO, SJO, or SJT AWG 16/3
230V 50/60 Hz Unit	
Rating at Full Load	4 A 760 Watt
Supply Cord Plug	NEMA 6-15P
Supply Cord GFCI	No
Supply Cord Length	10
Supply Cord Type	SO, SJO, or SJT AWG 16/3
Only plug the supply cord into a hospital-grade, voltage-matched receptacle that is properly grounded and polarized.	

## Top View



## Side View



**Note:** Leave a 24 inch clearance around the turbine.

## Contact Customer Service at:

Ferno-Washington, Inc.  
 70 Weil Way  
 Wilmington, OH 45177-9371  
 Phone ..... 800.733.3766  
                                  937.382.1451  
 Fax ..... 937.382.1191

Specifications are rounded to whole numbers.  
 Contact Ferno Customer Service for detailed specifications.  
 Ferno reserves the right to change specifications without notice.